



2022 Annual Report



Assiniboine Park
Conservancy



Mission

**Our Vision for the Future:
Assiniboine Park and Zoo will be a
thriving, welcoming, and innovation
hub of connection, conservation,
inspiration, and wellness.**

- 1 Welcome
- 4 Capital Development and Refurbishment
- 5 Zoo News
- 6 Community Events and Engagement
- 7 Fundraising Highlights
- 8 Education Programs
- 9 Conservation, Research and Sustainability
- 11 Staff and Volunteer Resources
- 12 Diversity and Inclusion
- 13 Financial Statements
- 17 Donor List

2022 was an exciting year for the Grassland Butterfly Conservation Program as our team released zoo-reared Dakota skippers and Poweshiek skipperlings into the wild.



Welcome

On December 3, 2022, after more than a decade of planning and preparation, The Leaf opened to visitors

On December 3, 2022, after more than a decade of planning and preparation, the Assiniboine Park Conservancy (APC) opened The Leaf and invited visitors in from out of the cold to explore this stunning plant paradise.

It was a moment worthy of celebration, reflection, and anticipation; celebration of this exciting milestone, reflection on our past, and anticipation as we look toward the future.

APC was created in 2008 by the City of Winnipeg with a mandate to operate and establish a future vision for the Park that would ensure its long-term financial viability while protecting its cherished character. At the time, the Zoo was on the brink of closure, the Conservatory was at the end of its lifespan, and other Park amenities and attractions were in various states of disrepair.

In 2009, APC unveiled a visionary redevelopment plan that has transformed the Park into a place of pride for Manitobans and a popular tourist destination for visitors from around the world. With the opening of The Leaf, that redevelopment journey has come to an end and APC is poised to enter a new phase of operations.

We are proud to reflect on the accomplishments of the past decade and excited to explore the possibilities that lie ahead as we build new

partnerships within our community and work to bring these incredible spaces, attractions, and amenities to life in new, meaningful, and memorable ways.

In this report, we have shared highlights of all that has been accomplished in the past year. While the opening of The Leaf was certainly a high point, there were notable achievements in virtually every aspect of our operations.

Thank you to our esteemed employees and volunteers who rose to every challenge and dedicated themselves to our visitors and the welfare of the Park and Zoo.

Thank you to our volunteer Board of Directors who exhibited exceptional guidance and assistance throughout a demanding and exciting year.

Last but not least, thank you to our loyal members, visitors, donors, sponsors, and the wider community for your enduring support and for celebrating these milestones with us.

Douglas E. Pollard

Chair, Board of Directors

Ray Karasevich

President & CEO

Founded in 2008, the Assiniboine Park Conservancy (APC) is governed by a Board of Directors comprised of community leaders whose affection for Assiniboine Park translates into a deep sense of responsibility to our stakeholders. They provide leadership, valuable guidance, and essential connections to the communities we serve. The Board of Directors includes representation from the City of Winnipeg as well as accomplished and respected leaders in our business, philanthropic, and post-secondary communities.

The Leaf - Canada's Diversity Gardens is the final major phase in the redevelopment of Assiniboine Park and Zoo that was launched in 2009.







New benches were placed in the Lyric field coinciding with the planting of 100 new trees.

CAPITAL DEVELOPMENT AND REFURBISHMENT

The Leaf

The Assiniboine Park Conservancy celebrated the public opening of The Leaf on December 3, 2022. The opening marked completion of **The Leaf – Canada’s Diversity Gardens**, the final major phase in the redevelopment of Assiniboine Park and Zoo that began in 2009.

Surrounded by approximately 30 acres of new public gardens and greenspace, The Leaf features state of the art engineering and stunning architecture designed to create a transcendent visitor experience and optimal growing conditions for thousands of trees, shrubs, flowers, and other plant life flourishing in four unique indoor biomes.

Through horticultural and interpretive displays, education programs, on-site engagement, and special events, visitors are invited to explore the human connection with nature and the role plants play in shaping our communities and cultures.

The Leaf – Canada’s Diversity Gardens is the most significant horticultural development undertaken in Canada within the past 25 years.

The project was made possible with support from the Government of Canada, Province of Manitoba, City of Winnipeg, and private donors.

Zoo Improvements

Over the summer, renovations were completed in the cougar and lynx habitats in the **Grasslands and Boreal Forest** section of the Zoo, giving our resident cats a more spacious and enriching habitat. Teeka, a female cougar, and Bizhew, a male Canadian lynx, moved into their new habitats in early August.

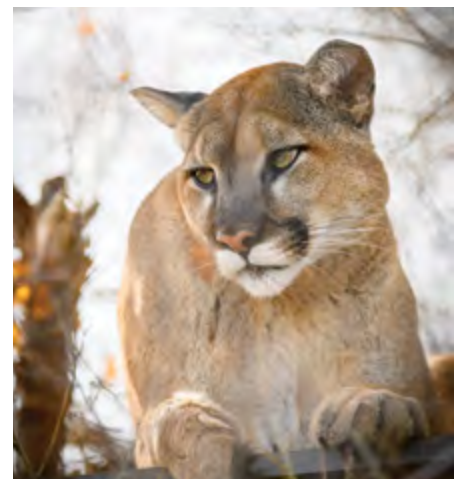
Shade structures were installed in the outdoor **polar bear habitats** at the Leatherdale International Polar Bear Conservation Centre in November. This addition to the bear habitats follows the **Association of Zoos & Aquariums (AZA)** standards for animal choice, allowing the bears to choose if they wish to seek shelter or remain in the uncovered portion of the space.

To maintain accessibility and improve visitor experience, pathway improvements were completed in **Journey to Churchill** and the **Animals of Asia** section of the Zoo.

Park Improvements

In early June, 20 aging wood benches around the Lyric field were replaced with 30 new composite benches. This was completed in conjunction with the planting of 100 trees through the donor-supported **Trees for Tomorrow Fund**.

Over the course of the year, APC continued to invest in general electrical upgrades and pathway improvements throughout the Park.





Rocky Mountain goats came to us from Calgary Zoo in September.

ZOO NEWS

Acquisitions

In May 2022, the Zoo rescued a 28-year-old female **polar bear** (Agee), who spent most of her life with a private owner in British Columbia. Agee has adjusted well to her new home.

Male **Belgian draft horse** (Drifter) joined our Percheron draft horses at the McFeetors Heavy Horse Centre for the summer season. He visited us from a farm in the Parkland Region and returned to his owners in December 2022.

Adorable male **prehensile-tailed porcupine** (Sangria) arrived from Safari Niagara in July. His habitat is located in the Kinsmen Discovery Centre.

Ten **Taveta golden weavers** arrived from Calgary Zoo and can be found at the Kinsmen Discovery Centre.

Two female **Goeldi's monkeys** (Sydney and Calli) arrived from Saskatoon Forestry Farm & Zoo in August. Their transfer to Assiniboine Park Zoo was recommended by the AZA Callimico SSP.* They were successfully introduced to

our male (Johnny) and can be viewed inside Toucan Ridge.

Two **scarlet ibis** and two **roseate spoonbills** have joined our free flight flock inside Toucan Ridge. Both transfers were recommended by the species' SSP.* The ibis were transferred from Toronto Zoo, while the spoonbills came all the way from Cameron Park Zoo in Waco, Texas.

We welcomed four **common wallaroos** in September; one female (Lea) and three males (Han, Wicket, and Gizmo). We are excited to join and work with the AZA Common Wallaroo SSP!*

Three **Rocky Mountain goats** arrived from Calgary Zoo in September. Amanda is 15 years old and sisters Pika and Peyto are two years old. Their habitat is found in the Grasslands and Boreal Forest section of the Zoo.

Notable Departures

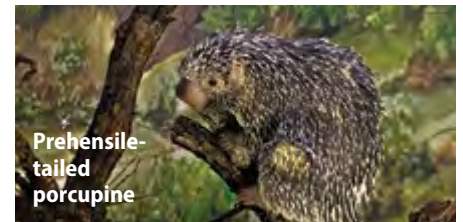
The AZA Red Panda SSP* recommended the transfer of our two young female **red pandas**, Rose and Poppy, in 2022. In June, Rose was

transferred to Prospect Park Zoo in Brooklyn, New York. In November, Poppy was transferred to Everland Zoological Gardens in the Republic of Korea.

Births

Female **reindeer**, Aurora, gave birth to male calf, Blue, on April 23. You can find Blue in the Grasslands and Boreal Forest section of the Zoo.

* Through Association of Zoos & Aquariums (AZA) Species Survival Plan® (SSP) Programs, accredited Zoos work together to ensure genetic diversity among a population in human care.



Prehensile-tailed porcupine



Goeldi's monkey



Guests enjoyed over 1.5 million lights at Zoo Lights!

COMMUNITY EVENTS AND ENGAGEMENT

The Casinos of Winnipeg Summer Entertainment Series ran June through August, featuring over 30 musical acts at the Lyric Theatre and Performance Garden at The Leaf. Wellness Wednesdays made their debut featuring sessions of yoga, mindfulness, mobility, and Tai Chi. Movies in the Park returned every Friday in August, and art exhibitions were featured in The Pavilion galleries. The Summer Entertainment Series continues to be free to the public and made possible through sponsorship and donor support.

Boo at the Zoo presented by Access Credit Union returned in October. The event ran over the course of 21 nights between October 7 – 30. The Zoo was transformed into a mystical fair by a traveling caravan of witches, wizards, and warlocks!

Zoo Lights presented by Red River Co-op returned to brighten the Zoo with over 1.5 million lights and ran over the course of 31 nights from December 1 to January 8, 2023.

In 2022, 13,500 **Community Access Vouchers** offering free admission to the

Zoo were distributed through partnerships with the United Way, MANSO, and numerous other community agencies. This represented an increase of 5,500 vouchers over the previous year and the addition of several new partner organizations. Through the distribution of Community Access Vouchers, APC aims to support individuals facing health and socio-economic challenges by removing financial barriers to visiting the Park's admission-based attractions.

On Friday, September 30, APC honoured the **National Day for Truth and Reconciliation** and **Orange Shirt Day**, a day of awareness and action acknowledging the tragic legacy of Canada's residential school system. APC's National Truth and Reconciliation Day Committee partnered with Dreamcatchers Promotions, a local Indigenous organization, to design a unique orange lapel ribbon for APC visitors to purchase as part of an APC National Day for Truth and Reconciliation Fundraising Initiative. 100% of ribbon donations and 30% of sales earned on September 30 from Zoo admissions, the Park Café, and Tundra Grill were donated to the Orange Shirt Society and the Wa-Say Healing Centre.

On May 7, APC hosted a **day of solidarity with the people of Ukraine and Manitoba's Ukrainian Canadian community** by donating 30% of sales earned from Zoo admissions and Park and Zoo restaurants to relief efforts in Ukraine. Proceeds were equally divided between the Canada-Ukraine Foundation's humanitarian appeal and the European Association of Zoos and Aquaria emergency appeal for Ukrainian zoos.

APC's Pride Committee continued to engage various LGBTQIA2S+ stakeholders, creating opportunities for staff and volunteers to participate in meaningful, inclusive, and informative events in support of Pride Month. In June, APC entered a beautiful float in the **Pride Parade** and many staff members and volunteers came out to support the event.

After a two-year hiatus, APC welcomed over 1,600 very special guests to the seventh annual **Wildest Dreams event** at Assiniboine Park Zoo. Wildest Dreams is a special event that provides a once-in-a-lifetime Zoo experience for children and families facing health and/or socio-economic challenges.



Hartley T. Richardson, Founding Board Chair, and Margaret Redmond, Founding President & CEO, launched the \$1.5 Million Match Challenge in support of The Leaf – Canada's Diversity Gardens in June.

FUNDRAISING HIGHLIGHTS

Community dedication to the Park was a key source of support in 2022. Donors designated their gifts to the areas of the Park and Zoo that were most meaningful to them, including animal enrichment, animal care, the tree canopy, gardens, and more!

New Initiatives

In June, a **\$1.5 million match challenge** was launched with the generous support of the Richardson Foundation. The response was tremendous, and gifts to The Leaf – Canada's Diversity Gardens from over 700 donors were matched, helping to make this beautiful new attraction a reality.

A generous gift from the Dorothy Strelsin Foundation supported the planning and development of a new **Polar Bear Education Program** to be piloted in 2023. Developed for grade seven students, this exciting new educational opportunity features multiple Zoo visits, access to APC conservation scientists, and the chance for students to contribute to ongoing research projects.

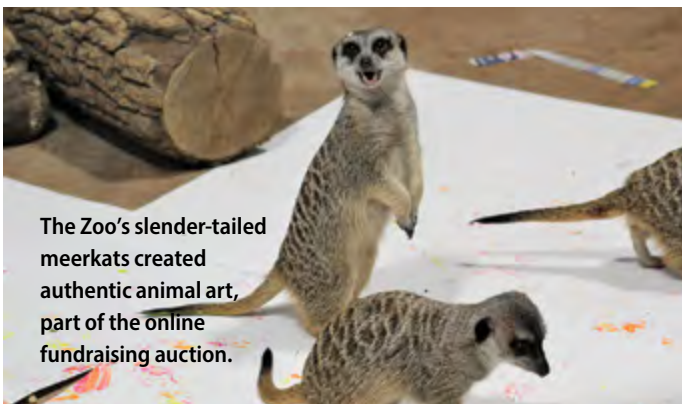
Garden Party

We were thrilled to welcome 425 guests back to the Leo Mol Sculpture Garden in August for our annual **Garden Party fundraiser**. Our third annual online auction was launched

that evening, in conjunction with the event. Altogether, **over \$200,000 was raised** in support of the gardens at Assiniboine Park and The Leaf.

Grants

APC was the recipient of **grants totaling over \$445,000 in 2022**. This support will assist with improved pathways throughout Assiniboine Park, event enhancement, artwork restoration at The Pavilion, and expanded wildlife research, education, and programming.



The Zoo's slender-tailed meerkats created authentic animal art, part of the online fundraising auction.



Guests at the Garden Party enjoyed a festive atmosphere in the Leo Mol Sculpture Garden.



Led by an education staff member, the Curiosity Cart provides a sensory educational experience in The Leaf.

EDUCATION PROGRAMS

In February, to celebrate I Love to Read month, **free virtual programs** were offered to schools in Manitoba giving over 600 students in 31 groups the opportunity to connect to the Zoo and Park. Themes included: how animals adapt to living on sea ice, the role of modern zoos, the importance of rainforests, and how our love for nature inspires climate action.

Development of a **Polar Bear Education Program** got underway in 2022 and will be piloted in the spring of 2023. This program, made possible by the Dorothy Strelsin Foundation, will focus on polar bears and their

role in the Arctic ecosystem. Students will spend two days at the Zoo interacting with members of APC's Education and Conservation and Research teams, learning about these incredible animals and the challenges they are facing caused by climate change.

The opening of The Leaf has presented the Education team with amazing new opportunities to educate and engage with visitors.

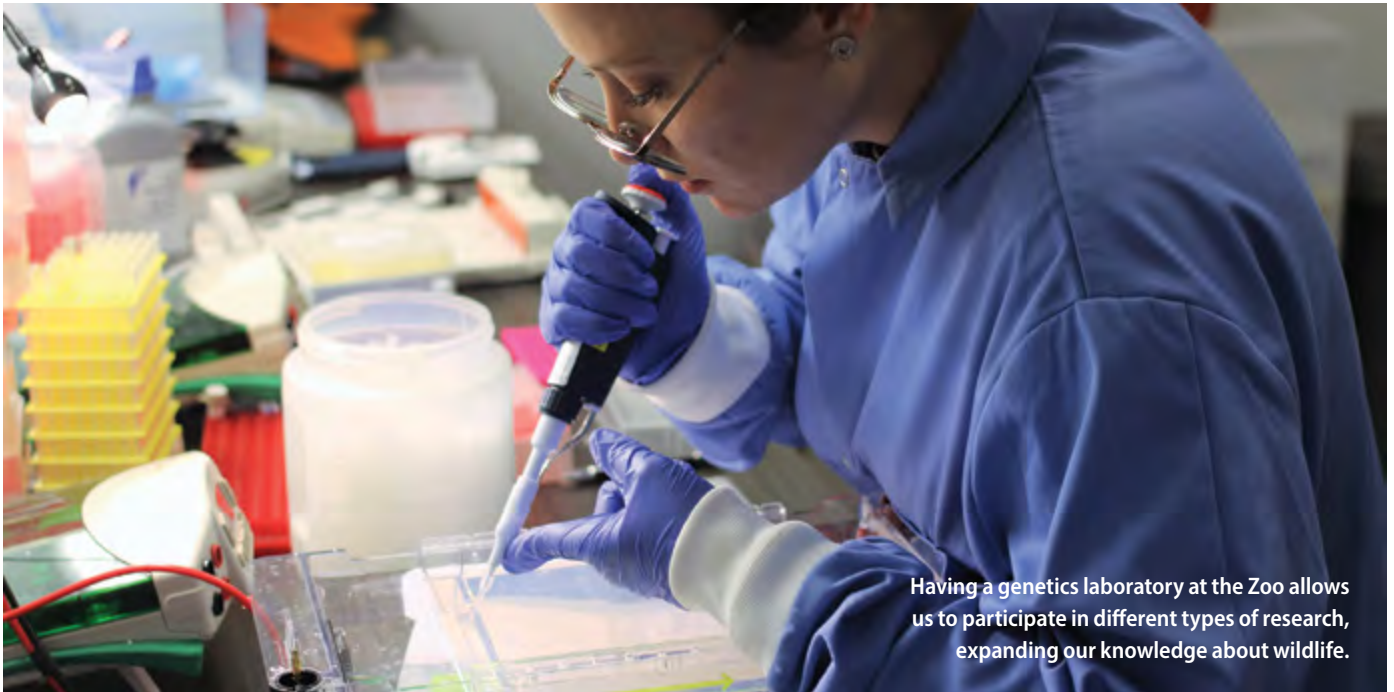
New initiatives included a mobile **Curiosity Cart** that can be stationed in the biomes at The Leaf to provide a sensory educational

experience led by an education staff member or trained volunteer.

A **free sustainability tour** was launched that highlights the sustainability features of The Leaf and supports the Leadership in Energy and Environmental Design (LEED) certification.

The Education team also developed six new school programs, five new tours, new camp options, and plans for many more workshops and experiences that will be offered at The Leaf in 2023.





Having a genetics laboratory at the Zoo allows us to participate in different types of research, expanding our knowledge about wildlife.

CONSERVATION, RESEARCH AND SUSTAINABILITY

Our Conservation and Research team had another phenomenal year with exciting progress on several initiatives.

Northern Marine Mammal Research

In late May and early June, our team returned to Churchill, Manitoba to continue researching how harbour seals are using the Churchill River. With assistance from the Zoo's veterinary team, Conservation and Research staff were able to safely attach a **satellite tag** to a wild harbour seal. By tracking the movements of this seal, we will better understand how seals use the freshwater and marine ecosystems and learn more about their diet and behaviours in the Churchill River area. This is part of a long-term study that will help us understand how climate change is affecting Arctic ecosystems.

Work continued on the development of a **habitat suitability model and wildfire risk model** for polar bear denning habitats in Manitoba. The results of this study will provide valuable information to communities and land managers to ensure the preservation of this habitat for polar bear denning in the future.

Exploring minimally invasive research techniques for studying polar bears continues to be a priority for the Conservation and Research team. The **polar bear hair growth study** is now in the analysis phase with a full year of hair samples voluntarily collected here at the Zoo. Additional projects that will help us understand the personalities and behaviours of bears in our care continued throughout the year.

The team also continued work on the **Beluga Bits project**, collecting over 6.3 terabytes of video for the collaborative, citizen science-based project studying beluga whales in the Churchill River estuary. Beluga Bits in the Classroom, a new education program launched in 2022, provides teachers with a free classroom resource designed to introduce students to citizen science, beluga whales, and the northern ecosystem. Over 25,000 citizen scientists from around the world have participated in Beluga Bits to date, helping our team answer questions about beluga health and social structure.

Grassland Butterfly Conservation Program

It was an exciting year for the **Grassland Butterfly Conservation Program**. Our team released 16 zoo-reared Dakota skipper adults into the Interlake region of Manitoba, a first for both our program and Canadian populations. Additionally, they released an incredible 191 Poweshiek skipperling adults into the Manitoba Tall Grass Prairie Preserve, the largest release since the program's inception. Our head-starting efforts expanded for both species and breeding of Poweshiek skipperling continued at the Zoo.

In 2022, the team completed sequencing of the Poweshiek skipperling genome, an achievement that will help us understand the remaining populations of these species and the threats they face.

While survey efforts expanded in 2022, they yielded fewer observations of both species, underscoring the importance of ongoing collaborative conservation efforts. Our team continues to work closely with local and international partners to save these species from the brink of extinction.



In the fall, waste audits were conducted in the Park and Zoo with the goal of developing a waste and recycling management plan.

Chimney Swifts

The Zoo’s **artificial chimney** was refinished in 2022 with funds from the Manitoba Chimney Swift Initiative and APC’s Wildlife Conservation Fund. Contractors installed metal cladding on the sides of the chimney to extend its lifespan. For the fourth consecutive year, the chimney was once again home to a nesting pair of threatened chimney swifts! Using a remote trail camera, the team confirmed that four nestlings successfully fledged from the nest.

Burrowing Owl Recovery

In summer, members of the Conservation and Research and Veterinary teams assisted the **Manitoba Burrowing Owl Recovery Program** (MBORP) with banding of burrowing owls in southwestern Manitoba. They banded eight baby burrowing owls and performed health checks on another seven that were too small to band. In addition, blood samples were taken from each owl to determine its sex, which is valuable information MBORP can use for planning breeding and releases.

Sustainability

In 2022, **APC recycled over 15,000 disposable masks** in partnership with

TerraCycle. A collection bin, located at the Zoo exit, provided visitors with a convenient place to safely deposit their disposable masks as they left the Zoo. Masks were then transported to a recycling facility where the contents are sorted and broken down into separate materials that are incorporated into new products. Plastic cards, batteries, corks and holiday lights were also collected from the community for recycling.

In April, the Park hosted a three-day Earth Day celebration with the support of the Association of Zoos & Aquariums (AZA) and Assiniboine Credit Union. The event called **Party for the Planet** increased visitor awareness on climate change with events at the Zoo and a Park clean-up.

In September, APC participated in the **Great Canadian Shoreline Cleanup** collecting over 100 kg of waste from the Park and riverbanks.

In the fall, **waste audits were conducted in the Park and Zoo** in partnership with Recycle Everywhere and Red River College with the goal of developing a waste and recycling management plan to maximize recycling,

composting, and re-use opportunities and minimize on-site waste generation.



The artificial chimney at the Zoo.



Volunteers help with special events at the Zoo such as Red Panda Weekend.

Staff and Volunteer Resources

Health and Safety

Throughout 2022, the **APC Health and Safety Team** remained committed to working with all departments to ensure a safe and healthy work environment for employees. **The Health and Safety Committee** also played a critical role in promoting a culture of safety within the organization, where employees are encouraged to take an active role in identifying and reporting potential hazards. In partnership with Safety Services Manitoba, APC offered advanced safety training for staff including fire safety training, first aid, and mental health first aid.

The **APC COVID-19 task force**, a division of the Health & Safety team, amended APC's COVID-19 protocols to also include Infection Prevention and Control (IPC) Guidelines. In October, APC offered a two-day, influenza and COVID-19 vaccine clinic for staff and their immediate family members. APC continued to monitor all viral illnesses to help reduce the risk of workplace spread.

Volunteer Resources

This year was the most successful for volunteer recruitment and support to date! In 2022, **volunteers contributed over 61,000 hours** supporting every business unit at APC. Volunteers were a key contributor to daily operations at the Park and Zoo and special events such as Boo at the Zoo and Zoo Lights, with hundreds of volunteers supporting all areas of the festivities.

In the summer months, volunteers were a helpful presence in the Gardens at The Leaf, weeding the many beds alongside horticulture staff, welcoming visitors to the summer concerts in the gardens, and conducting tours for guests.

Starting in September, volunteers assisted with preparations for the opening of The Leaf. The team assembled furniture, prepared planters, unpacked dishes and helped with many other tasks, so staff could focus on larger projects.

In November, volunteers became the "test visitors" at The Leaf, walking through the biomes, timing length of stay, testing scanning

equipment, and helping staff prepare for the public opening. Volunteers were present for the many opening events at The Leaf and played an important role as we welcomed special guests.



DIVERSITY AND INCLUSION

In 2022, APC continued to provide training for all staff about diversity and inclusion, inspiring staff to champion these values and build awareness around unconscious bias and strategies to create a more inclusive organization. Last spring, we rolled out **Diversity and Inclusion Training** through Canadian Equality Consulting with a focus on bias awareness. In addition, all staff were offered the 4 Seasons of Reconciliation training, an online program that promotes a renewed

relationship between Indigenous Peoples and Canadians through transformative learning about truth and reconciliation.

In September, APC partnered with the Community of Big Hearts to deliver **The National Truth and Reconciliation Call to Action 92: Inspiring Empathy and Action Becoming Part of the Solution on Your Truth and Reconciliation Journey** to all staff.



Report of the Independent Auditor on the Summary Financial Statements

To the Board Members of
Assiniboine Park Conservancy Inc.

Opinion

The summary financial statements, which comprise the summary balance sheet as at December 31, 2022, and the summary statement of operations and changes in unrestricted net assets for the year then ended, are derived from the audited financial statements of Assiniboine Park Conservancy Inc. (the "Organization") for the year ended December 31, 2022.

In our opinion, the accompanying summary financial statements are a fair summary of the audited financial statements.

Summary Financial Statements

The summary financial statements do not contain all the disclosures required by Canadian accounting standards for not-for-profit organizations. Reading the summary financial statements and the auditor's report thereon, therefore, is not a substitute for reading the Organization's audited financial statements and the auditor's report thereon.

The summary financial statements and the audited financial statements do not reflect the effects of events that occurred subsequent to the date of our report on the audited financial statements.

The Audited Financial Statements and Our Report Thereon

In our report dated April 26, 2023, we expressed an unmodified audit opinion on the audited financial statements.

Management's Responsibility for the Summary Financial Statements

Management is responsible for the preparation of the summary financial statements in accordance with the financial reporting provisions.

Auditor's Responsibility

Our responsibility is to express an opinion on whether the summary financial statements are a fair summary of the audited financial statements based on our procedures, which were conducted in accordance with Canadian Auditing Standard (CAS) 810, *Engagements to Report on Summary Financial Statements*.

Deloitte LLP

Chartered Professional Accountants
Winnipeg, Manitoba
May 24, 2023

Financial Statements

Summary Balance Sheet as at December 31

Assiniboine Park Conservancy Inc.

		2022	2021
ASSETS			
Current	Cash and short term investments	\$ 25,785,876	\$ 27,009,302
	Accounts receivable	1,331,874	1,609,147
	Government grants receivable	350,000	3,150,000
	Government remittances receivable	495,199	128,771
	Inventory	476,738	333,092
	Prepaid Expenses	673,588	465,139
		29,113,275	32,695,451
Long term	Accounts receivable	90,000	45,000
	Capital assets (Note 1)	213,532,869	194,362,102
	Art collections	14,058,344	14,058,344
	Employee benefits receivable	170,327	162,351
		\$ 256,964,815	\$ 241,323,248
LIABILITIES			
Current	Accounts payable and accrued liabilities	\$ 13,492,007	\$ 9,730,802
	Deferred contributions—operating	920,363	712,800
	Deferred revenue	2,189,048	1,346,694
	Notes payable	12,975,000	3,121,000
	Advance from Province of Manitoba (Note 2)	5,353,889	—
		34,930,307	14,911,296
Long term	Advance from Province of Manitoba (Note 2)	—	6,858,239
	Deferred revenue	90,000	45,000
	Deferred contributions—capital	201,627,515	198,311,842
	Accrued employee benefits	114,801	106,825
		236,762,623	220,233,202
NET ASSETS			
	Restricted	14,058,344	14,058,344
	Internally Restricted (Note 3)	6,127,267	7,015,000
	Unrestricted	16,581	16,702
		20,202,192	21,090,046
		\$ 256,964,815	\$ 241,323,248

Note 1 The Province of Manitoba has a \$30 million investment in the Leatherdale International Polar Bear Conservation Centre and Polar Bear Facilities, which include the Gateway to the Arctic Building, the Animal Holding and Filtration System Building and the Polar Plunge. As a result, the Province's \$30 million investment in these capital assets do not appear on the Conservancy's balance sheet.

Note 2 The Conservancy received a \$10 million contribution from the Province of Manitoba for the development of Canada's Diversity Gardens project (the "Project"). The terms of this contribution include a matching requirement whereby the Conservancy is entitled to keep \$1 of the contribution for every \$2 in additional funds raised for the Project. In the event that the Conservancy does not raise the full amount of additional funding by March 31, 2023, the Conservancy will be required to repay the unmatched funding. As at December 31, 2022, the amount of unmatched funding is \$5,353,889.

Subsequent to year-end, the deadline to meet the matching requirement was extended by a year to March 31, 2024. The matching requirement was also reduced so that the Conservancy is entitled to keep \$1 of the contribution for every \$1 in additional funds raised for the Project. Subsequent to year-end, the Conservancy has met all matching requirements.

Note 3 The Conservancy has internally restricted funds for a fiscal stabilization reserve to support the long-term sustainability of the organization.

Financial Statements

Assiniboine Park Conservancy Inc.

Summary Statement of Operations and Changes in Unrestricted Net Assets for the year ended December 31

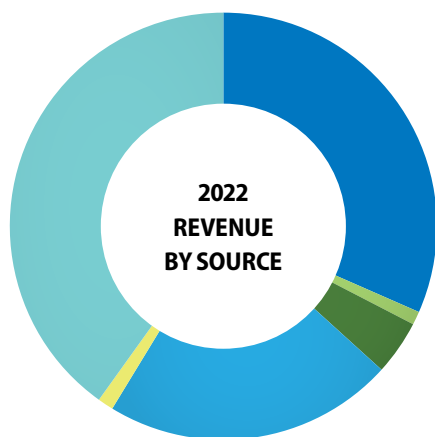
		2022	2021
REVENUE			
	City of Winnipeg	\$ 12,032,128	\$ 11,710,000
	Other operating grants	384,337	369,786
	Gifts and sponsorships	1,575,963	1,775,533
	Amortization of deferred contributions	8,375,610	6,730,107
	Interest and other income	454,093	129,055
	Park revenues	15,277,782	12,073,175
Total Revenue		38,099,913	32,787,656
	Direct costs of park revenues	9,289,541	6,686,215
		28,810,372	26,101,441
EXPENSE			
	Administration	2,567,351	1,782,777
	Amortization of capital assets	7,902,968	6,426,446
	Insurance	242,041	218,853
	Interest	65,689	17,689
	Operations	3,751,943	2,747,867
	Utilities	1,683,750	1,434,180
	Wages, benefits and contract services	14,701,577	13,079,342
	Donation to Winnipeg Foundation - ParkShare	3,469	3,513
Total Expense		30,918,788	25,710,667
(Deficiency) Excess of Revenue over Expense before Other Income		(2,108,416)	390,774
OTHER INCOME			
	Government subsidies	1,220,562	3,080,557
(Deficiency) Excess of Revenue over Expense		(887,854)	3,471,331
Transfer from (to) internally restricted net assets		887,733	(3,475,000)
Decrease in Unrestricted Net Assets		(121)	(3,669)
Unrestricted Net Assets, Beginning of Year		16,702	20,371
Unrestricted Net Assets, End of Year		\$ 16,581	\$ 16,702

Financial Statements

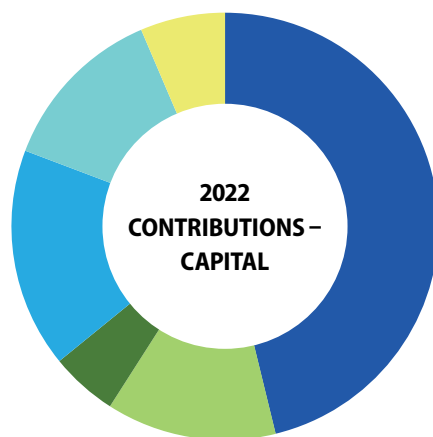
Assiniboine Park Conservancy Inc.

Deferred Contributions - Capital for the year ended December 31

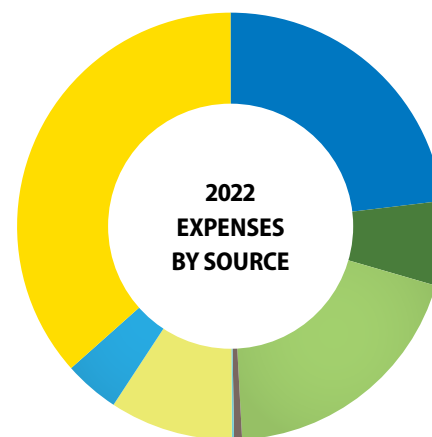
	2022	2021
Contributions received		
City of Winnipeg	\$ 5,400,000	\$ 5,100,000
Province of Manitoba	1,504,349	10,050,000
Federal Government	593,490	3,906,510
Foundations and Charities	1,943,289	2,180,850
Individuals	1,499,131	6,503,884
Corporations	751,024	758,105
Total Contributions	11,691,283	28,499,349
Amortization of deferred contributions	(8,375,610)	(6,730,107)
Advance from Province of Manitoba - Unmatched	-	(6,858,239)
Deferred Contributions - Capital, Beginning of Year	198,311,842	183,400,839
Deferred Contributions - Capital, End of Year	\$ 201,627,515	\$ 198,311,842



- Park revenues 40%
- City of Winnipeg 32%
- Amortization of deferred contributions 22%
- Gifts and sponsorships 4%
- Other operating grants 1%
- Interest and other income 1%



- City of Winnipeg 46%
- Foundations and Charities 17%
- Province of Manitoba 13%
- Individuals 13%
- Corporations 6%
- Federal Government 5%



- Wages, benefits and contract services 37%
- Direct costs of park revenues 23%
- Amortization of capital assets 20%
- Operations 9%
- Administration 6%
- Utilities 4%
- Insurance 1%
- Donation to Winnipeg Foundation - ParkShare 0%
- Interest 0%

Thank You

Capital

(cumulative to Dec. 31, 2022)

GOVERNMENT PARTNERS

Government of Canada
Province of Manitoba
City of Winnipeg

\$5,000,000+

The Paul Albrechtsen Foundation
Qualico
Richardson Foundation
Hartley and Heather Richardson
and Family

\$2,000,000–\$4,999,999

The Asper Foundation
Bison Transport and the Jessiman
Foundation
Carolyn Sifton Foundation
Diane and David Johnston/
Johnston Group Inc.
Douglas & Louise Leatherdale
Sean McCoshen
Raymond & Lynne-Anne McFeetors
Shirley Richardson and her family
Jim & Leney Richardson
Carolyn & Larry Hursh
Serena Richardson & Kurt
Weinheimer
Sara & Graeme Thomson
Royden** & Beverley Richardson
and their family

\$1,000,000–\$1,999,999

Gail Asper
Canada Life
The Chipman Family Foundation
Susan Glass and Arni Thorsteinson
Deborah Gray
Michael Sydney Gray
Sara Gray in memory of Gerry &
Mona Gray
Doug Harvey & Jan Shute
Pace Homes Ltd., Guy & Deanna
Hobman
MacDon Industries Ltd. and the
MacDonald Family
Richard Morantz & Sheree Walder
Morantz and Family
Michael Nesbitt
The Pollard Family Foundation

Bob & Marnie Puchniak
George** & Tannis Richardson
The Family of R.T. Riley
Don & Jennifer Streuber
Marc Tallman, Matt Tallman, Cathy
and Bob Tallman
Bob Williams
The Winnipeg Foundation

\$750,000–\$999,999

Wawanesa Insurance

\$500,000–\$749,999

Kristjan & Shirley Benidickson
CIBC
James Cohen & Linda McGarva-
Cohen
Desjardins Insurance
IG Wealth Management
Mauro Family Foundation
Novak MacDonald Fund
Power Corporation of Canada
RBC Foundation
J. Derek Riley
Sandy & Deborah Riley
–Jessica, Meghan & Sanford
Silver Jeans Co.
The Thomas Sill Foundation Inc.
Anonymous (1)

\$250,000–\$499,999

BMO Financial Group
Canadian Pacific
Prosper Wealth Ltd and the Devos
Family
Bryce & Nicki Douglas and Family
Exchange Income Corporation
Bert and Lee Friesen Foundation
Gardens Manitoba
Kenwal Ltd.
The Graham C. Lount Family
Foundation
Estate of Frances Grace Lowe
Frank & Jeanne Plett
Oliver & Genevieve Plett
TD Bank Group

\$100,000–\$249,999

Air Strength Canada
Peggy Alto & Michael Guttormson
ATCO Structures & Logistics*
Barkman Concrete
Barrick Gold Corporation

Beaver Truck Centre
Carol Bellringer & Greg Doyle
Marjorie Blankstein
OmniTRAX Canada and The Broe
Family
Cambrian Credit Union
The Cardinal Foundation
Leona and Art DeFehr
Deloitte Foundation Canada
Greg Fettes & Carmyn Aleshka, Jeff
Fettes & Chris Wallace
Robert and Ana Fridfinnson and
Family
George and Carol Gamby
Elaine Heinicke
Laddie & Pat Hutchison
J.K. May Investments Ltd.
Jewish Foundation of Manitoba
Estate of William Thomas Kirk
Hubert & Bernice Kleysen
Marion & Myron Klysh
KPMG
Richard & Hillaine Kroft, Steve & Lisa
Kroft, and Conviron
Jack and Zina Lazareck and Family
Mrs. Valerie MacKenzie
Anne & Paul Mahon
The McGarry Family
Gordon & Maggie McNaught
MLT Aikins LLP
The Murphy Foundation
Incorporated
Ken & Kaaren Neufeld
Parrish & Heimbecker, Ltd.
The Parrish Family
Gerry & Barb Price
PwC Canada
B.A. Robinson Co. Ltd. and The Ross
Robinson Family Foundation
In memory of Roberta Rosenberg
by her brothers Lewis & Ken
Rosenberg
The Gerald Schwartz & Heather
Reisman Foundation
Gerry Searcy & Jacqueline
Robertson
Secter & Guralnick Families
Towers Realty Group:
Rena & Barry Shenkarow,
Mira & Matthew Narvey,
Carrie Shenkarow
The Shindleman Family
Charlie and Dayna Spiring

Steinbach Credit Union
Western Financial Group
In memory of Eileen and John
Wherrett
Winnipeg Building &
Decorating Ltd.
Mitch & Wanda Zajac
Anonymous (2)

\$75,000–\$99,999

Brian Hawes
Ron Jones & Gloria Dutchuk

\$50,000–\$74,999

Assiniboine Credit Union
Bell MTS
Elizabeth & Michael Boroditsky
David Brown & Dawna Wallace
Daniel Bubis, Jennifer Blumenthal
& Family
Gary & Trish Buckley
Eileen & Bruce Erickson
Bill & Margaret Fast
Dianne Gamble
Greystone Managed
Investments Inc.
Elmer & Hilda Hildebrand
Dan & Katie Hursh
Ross A. and Elizabeth Josephine
(Betty Jo) Johnston
The Keg Steakhouse + Bar
Bob & Deirdre Kozminski
Hillaine Kroft
Nicholas Logan & Christine Skene
Jim & Roberta MacDonald
Elizabeth Marr & Nick Slonosky
James R. Morden & Family
National Leasing
Bonnie & Richard Olfert
Nancy A. Osler
Estate of Jean Proceviat
Winpark Dorchester Properties–
Rabb and Honigman Families
Sandra & Harvey Secter
Jeannie (Riley) & Rod Senft & Family
Gary and Gwen Steiman and
their grandchildren:
Matt, Abigail and Will Scott
Shea and Owen Gorenstein
Taylor and Sophie Steiman
Barry & Elane Talbot
Piston Ring Service and the Tennant
Family

Terracon Development Ltd.
Transolutions Truck Centres Ltd.
Nora & Harry Warren, in memory of
Paul Warren
Charles & Libby Winograd
Anonymous (3)

\$25,000–\$49,999

Access Credit Union
Assiniboine Park Redevelopment
Design Team:
The Portico Group
Number TEN Architectural
Group
SMS Engineering Ltd.
Crosier Kilgour & Partners Ltd.
KGS Group
Scatliff + Miller + Murray Inc.
Enermodal Engineering
HTFC Planning & Design
Anderson Family Foundation Inc.
Dick & Elaine Archer
Heidi & Rennie Balciunas
Estate of Eleanor Beaudoin
Thomas & Donna Bryk
The Cipryk Family
Pamela Cipryk & Brian Scharfstein
Chris & Gerry Couture
Doug, Verna, Erin & Ian Danylchuk
Kevin Dick, Rebecca & Hannah
Friesen
Neil & Carol Duboff & Rachel,
Michael & Jonathan
Dufresne Furniture & Appliances
Mrs. Gwendolyn Duha
Peerless Garments, Albert & Samira
El Tassi
David & Catherine Filmon
Barb Gamey
James Gibbs
Marjorie & Kenneth Grower
W. Bruce Henderson & Dianne
Szelag
Zorianna & Eugene Hyworon Family
The Johnson Family
Donald K. Johnson & Anna
McCowan Johnson
Alexandra Jones
Karen & Peter Leipsic
Adam, Marla, Ethan & Annie Levene
John Loewen
In memory of Joyce and Harold
Barber by Bev and Pep Lough
Peter & Maureen Macdonald
Trevor L. Maguire
Thelma Martin

Melet Plastics Inc.
Howard, Hope, Joshua & Samantha
Morry
Neptune Properties Inc.
Harvey & Jane Nikkel
Stanley & Dorothy Pauley
Payne Transportation L.P.
Tom & Gail Payne & Family
Wells Peever, Q.C. & Carol Peever
Sam & Caterina Pellettieri
Portage Mutual Insurance
Prendville Industries
The Ransby Family in memory of
Carolyn Ransby
Dr. Donald S. Reimer & Mrs. Anne
Reimer
Rick Riess & Jean Carter
Kelvin Shepherd & Debbie Wolfe
SMS Engineering Ltd.
Don & Karen Solman and Family
Stephen & Olive Spitzer
Curtis & Lorane Steiman & Family
Jim & Jan Tennant
Estate of Anne Tuchiwsky
Rob & Lois Vanderhooft
Simon & Deborah Waller

\$5,000–\$24,999

Jim & Margaret Astwood
Hardev Bains & Jody Hecht
Shantanu & Versha Banerji
Ian Barron
Linda Bartley
Neil & Maxine Benditt
Bruce Bennett & Shawna Cook
Victor & Debby Bergmann
Zita & Mark Bernstein Foundation
Joan Blight
John & Monique Bockstael
Ian & Judith Boulton
Morva Bowman & Alan Pollard
in memory of David & Myrna
Bowman
Dee Buchwald
Brock & Sophie Bulbuck
Timothy & Barbara Burt
Canadian Council of Chief
Executives
Florence Carey & Ben Rusch
Haderra & Mark Chisick–
Urbanmine Inc.
Stu Clark
Carolyn & John Coffin
Coghlan's Ltd.
Brian, Dee & Connor Coughlin
Cowan Steel

Carol Cowles
Cunningham Business Interiors, The
Robert W. Cunningham Family
Mark & Dorothy Danzker Perpetual
Trust Fund
Sally Dowler
Ryan Downey
Tim & Jennifer Dumore
Judy & Gary Edwards
The Einarson Family
The Embil Family
Exchange Group
Exco Ventures Ltd.–Electrical
Contractors
Jim & Marilyn Ferguson
Gary & Janice Filmon and Family
Dave & Cathy Finnbogason
David & Evelyn Friesen
Frontiers North Adventures
G.J. Vis Enterprises Inc.
Estate of Lilia Marjorie Gardner
Jean & Dennis Giguere
Brent & Debbie Gilbert
Chuck & Rosalyn Golfman
Cathy Goodman
Lane & Jean Graham
Leslie (Riley) & Buzz Grant
Mark & Anne Gray & Family
Ralph Guy & Kris Owen
Estate of Helen Gyorgy
Ernie Halligan
Gregg & Mary Hanson
Elizabeth & Kenneth Hanssen
Shayla Harapiak-Green & Patrick
Green
Kelly Harris
Sandra & Kent HayGlass
Hilary Druzman Inc.
J & D Penner Ltd.*
Martin & Jackie Johnson
Catherine Jones
Doris K. Jones in memory of Bert
Jones
Journey to Churchill Construction
Team
Marilyn Kapitany
Adrienne Katz and Family
Kevin & Els Kavanagh
Ken Rech Landscape Architects Inc
Stella & Edward Kennedy
KGS Group
Thomas Kresnyak & Duncan
Kresnyak
Ladco Co. Ltd.
Rick Lee & Laurie Shapiro
Linda Jean Presley Foundation

Charles & Karen Loewen
David & Marie Loewen
Joy, John, Lia & Sam Loewen
John MacNeill
Marguerite Sours Foundation
Manitoba Telecom Services Inc.
Valerie & Kim McCartney
Hon. Deborah McCawley & Hon.
Otto Lang
David McGoey
John T. McGoey
Donald R. McKenzie
Jim & Penny McLandress
Estate of Cathrine Ruth McLeod
Annette Miller
Ken & Sharon Mould
Margaret Mundie
Judy & Ken Murray
Nicky & Jeff Murray
Sheila A. Mymryk
David Negus & Debra Vanance
Bob & Cindy Newfield
Theresa Oye
Kaaren & Dave Pearce
Scott & Lorraine Penman
The Perrin Family
Kim & JP Perron
Don & Shirley Peterkin
Herbert J. Peters
Sherry Phaneuf
Leonard & Ruth Carol Podheiser
Brian & Sharon Postl
In memory of E. Gary & Helen
Powell by Jane Fudge & family
Wayne Pratt & Tracy Cartwright
Maureen Prendville & Paul Jensen
David, Joanne Provinciano and
Family
Quintex Services Ltd.
David & Shelagh Quinton
Patrick & Carla Rae
Margaret Redmond & Greg Gillis
Resolute Technology Solutions Inc.
Richard & Melissa Rice
Conrad S. Riley
Dennis & Marie Riley
Derek & Anne Riley
Michael & Janet Riley
Nancy Riley & Blake Murray
Patrick & Deborah Riley
Dr. Robert Ross
Leslie Sarchuk & Derek Fewer
The Honourable Richard J Scott &
Mary Scott
George & Pam Sigurdson
Lyle & Anna Silverman

Don & Terry Simons
Siobhan Richardson Foundation
Susan & Ken Skinner
Paul & Christine Soubry
Hugh & Susan Taylor & Family
Henry & Katy Thiessen
Todd & Ramona Thomson
Dr. Ken & Lorna Thorlakson
In Memory of Dr. Robert Thorlakson
Jack & Margo Toole
Bonnie Tulloch
Helga Van Iderstine
Iris Wachna and Family in memory
of William Wachna
Estate of Ulysses Stanley Wagner
Howard Ward
William & Maureen Watchorn
Donald & Florence Whitmore
Cathi & Rudi Wierckx
Donna & Bill Wilford & Family
Anonymous (6)

\$1,000–\$4,999

Wayne & Millie Acheson
Renée & Ron Adamik
France Adams & Stephen
Brodovsky & Family
Ian & Heather Adamson
Akins Building Consultants Ltd.
Property Management
Brian Akins
Bryan & Kirsten Albo
Adam & Vanessa Aleshka
Donna & Brock Alexander
American Women's Club of
Winnipeg
Terry & Barbara Andres
Erin Armstrong
Astroid Management Ltd.
Lloyd Axworthy & Denise
Ommanney
B.C. Goodwin Merchandising
Limited
Anne Bailey
Susan Bain
Cliff & Linda Bakowski
Noelle Barnes
Kim Basse
Bayview Construction
Estate of Kurtis Beach
Phyllis Bedder & Wayne Leach
Mary-Claire & Monty Bell
Joan Bender
Julian Benson & Susan Hoplock
Jamie Benidickson
Sangeet Bhatia

Bruce & Heidi Birchard
Douglas & Margaret Bishenden
Bison Transport
Valdine Bjornson & Barry Namaka
Verna Blight
Brian & Janet Bollman
Garry & Shirley Bolton
Laurie Bonten
Jane Bosace
J. Mary Bosman
Brooke & Paul Bouchard
Brenda Bracken-Warwick & Ken
Warwick
Brunswick Steel
Carol Campbell & Andrew Krentz
Capitol Steel Corp.
Gordon Carlow
Hope Carroll
Billy Carvelli
Tony & Silvana Catanese
Rheo Catt
Century 21 Apparels Ltd.
Laura Chan
Charleswood Veterinary Clinic
Kim Chipman
Cliff & Maxa Chisick
Hadera & Mark Chisick
Richard Chopp
Valerie Clancy
Trevor Clearwater
John Cole & Gisele Poirier
Beth Collin & Sadeesh Srinathan
Glen & Heather Colquhoun
M. E. Connor
Con-Pro Industries Canada Ltd.
Robert & Ruth Cooke
Hennie & Richard Corrin
Clare T. Cove
Meribeth Coyne
Irene Crofts
Ray Cryderman
Margaret Cuddy
Ashleigh Czornyj
Paul Daeninck & Monica Furer
Kerry Dangerfield
Hy & Esther Dashevsky
Dave & Pat Deighton
Olga Dilay
Jim & Judy Dowler
Mrs. M. C. Downey
Dr. Claudio Rigatto Medical Corp.
Trish Driedger
Lindsay DuVal & Scott Sutherland
Aris Economou
EECOL Electric
Lawrence & Brenda Ellerby

Ernest & Ruth Epp
Eyolfson Family
Susan Feldman
Colin & Alison Ferguson
Bob & Ginny Filuk
Fit 4 Two Winnipeg
Gisela & John Foerster
Shirley & Gord Froehlich
Gateway Construction &
Engineering Ltd.
Delores Gembey
Robert Giesbrecht & Shannon
MacFarlane
Arnold & Sharon Glass
Sandy & Sheldon Glass
J. R. Glen
Elaine & Hugh Goldie
Bruno Gossen
John & Linda Graham
Daniel Grzegorzczuk
Romeo, Teena & Anne Guffei
David Gurnham
John & Gail Guy
James & Irene Haddow
Anne Hagemeister
Albert Hague
Sheila Halper
Brian & Karen Halstead
Debbie Hannah
Gordon Harris
Ward & Debbie Harris
Yvonne Hawryliuk
Bruce & Helen Hayles
Harold Heide
Janet Heming
Yude M. Henteleff, C.M., Q.C.
Dan & Millie Herzog
Phyllis Hejmans
Pamela Hilderman & Dr. Jeffrey
Bergen
Joyce Hill
Evelyn Hind
Brandi Holden
Leanne Holmberg
Kevin Hunter
Mrs. Alice Hurd
Lorne Hurst & Elly Hoogterp-Hurst,
Kim & Niels
James Husiak & Diane Hudson
Dr. Danielle Jobb & Mr. Brendan
Roddy
Derek & Mary Johannson
Gloria Jones
Ian & Tammy Jones
Laurence Katz & Zoe Kogan
Gordon Keatch

Bruce Keats
Denny & Eryl Kells
Leah Kells
Paul & Lorraine Kerr
Dr. Tasadduq & Aliya Khan
Tim Killeen & Irene Hamilton
Calvin Kim
Liane & Bruce King
Kiwanis Club of East Kildonan
Katherine Klassen
William & Frances Kliever
Hubert Kohli
Mark Komus
Andre & Elsebeth Kriening
Jonathan & Cara Kroft
Jim & Wendy Krovats
Jessie Lang
Catherine Latocki
Nancy Laxdal
Patricia Lee
Patricia Lee
Rob Lee
Ginny Lees
Shaun Leonoff
Brian Lerner
Daniel Levin & Lillian Bonin
Keith & Linda Levit
Jennifer Lidstone
Jack & Debbie Lipkin
Estate of Dorothy Lynch
Karen & Daniel Machado
Beatrice MacKenzie
Carol & Richard Maccoomb
Terence & Eldred Mancer
Andrea Mann & Neil Antman
Margolis Capital Group Inc.
Dr. Neil & Elaine Margolis
Anna Maria Marinelli
Garry Markham
Jean Marrese
Paul & Shirley Martens
Greg Mason & Rita Gunn
Alan & Joanne Maxwell
Carol McArton
Ann McCaig
Ken McCrea
Leah McDonald
Patrick & Daniella McDonald
Tom McEachern
Kevin McFadden
Dawn McKeag
Barbara McLeod
Charles & Penelope McMillan
Douglas McMurray
George & Linda McNaughton
Scott & Maxine Merrell

Clint Miller
 Ethel Miller
 Deb & Jeff Molnar
 Gail Morberg
 Fujio Morita
 Robert J. Morrison
 Scott Murray
 Rochelle Nozick
 Number TEN Architectural Group
 Arun & Durga Ogale
 Oldfield Kirby Esau Inc.
 Michelle Ouellet
 Vaughn & Judy Paquette
 Carol Paradine
 Dr. Jason Park
 David & Mary-Beth Parrish
 John Parrott
 Payworks
 Peter & Anita Pelech
 Carmele Peter
 Edith Peterson
 Danuta Podkomorska
 Calvin & Jennifer Polet
 Dr. William Pope & Dr. Elizabeth
 Tippet-Pope
 Elizabeth & John Prall
 Chasity Premack in memory of my
 husband Mr. Terrence Mathew
 Premack
 Carolynne Presser
 Aubrey Prime
 Quantum Graphics &
 Consulting Inc.
 Doreen & John Reimer
 Aimee Rice & Chris Allinotte
 Joan Richardson
 Michael Rogers
 Ro-Mor Enterprises
 Allan & Myrna Ronald
 Carol Ross
 Charles & Naida Rubin
 Dean & Rachel Scaletta
 Walt Schoenhausen
 Janet Schubert
 Elizabeth Schwersensky
 Margaret Seifert
 George Shand
 Paul Shelton & Gina Rempel
 Walter & Nicole Silicz
 Deanna Silvester in memory of Mait
 & Neta Silvester
 Theodore Simonson
 Berenice Sisler
 Don Slough & Leslie Speirs
 Rod & Pat Small
 Sofa Logic Inc.
 Rae Spear

Sandra Spragg
 St. Boniface Pallet Co.
 Craig & Nancy Stahlke
 Sandra L. Stewart
 Geraldine & Brian Taillieu
 Charles Tax
 TCU Financial Group
 Teshmont Consultants LP
 Doreen Thompson
 Marilyn Thompson
 Nigel J. Thompson
 Kathleen Tiede
 Wayne & Carolyn Townsend
 Sonia Tunstead
 Paul & Trish Verwymeren
 Robert Vialoux
 Donna Wall
 Charlotte Warner
 Carol Wattinger
 Joan Wheeler
 Heidi & Robert White
 The Whitwell Group Inc.
 Kevin & Marj Wiebe
 Wilder Wilder & Landry
 Carolyn & Claude Wilson
 Shauna Wilton
 Winnipeg Steelmen's Association
 Beverley & Doug Witt
 Mary Wladyka
 Sharon & Brian Wolchuk
 Isadora Wolfe
 Ken W. & Betty K. Wong
 Dennis & Janet Woodford
 Anita Wortzman & Ron Yurman
 Carole Wright
 Terence Wuerz & Jacqueline Dirks
 Medical Corporation
 Eldred & Eleanor Wyche
 Dorothy Y. Young
 Nicole Zoubek
 Kevin & Jo-Ann Zuk & Family
 Anonymous (42)

Annual (2022)

\$250,000

The Dorothy Strelsin Foundation

\$50,000–\$74,999

Estate of Bryan Natch—In Memory
 of Eva Natch

\$25,000–\$49,999

D. & H. King
 Anne & Paul Mahon
 Suzanne L. Wylie & John T. Wylie

\$5,000–\$24,999

Meaghan Bullen
 Irwin and Jonathan Corobow and
 Rosalie Lazar
 Jeannine Dufault
 Jean & Dennis Giguere
 Ilona Grymonpre & Dennis Millan
 Rahul Gupta
 Houston Family of Bradwardine
 Fund
 Jeff Itzkow & Cathy Moser
 Diane and David Johnston
 Marion & Myron Klysh
 Linda Jean Presley Foundation
 Manitoba Blue Cross
 Kerstin Mehmel
 Ralph Melnicer
 Mike & Roz Moore
 Lorraine Oades
 Kevin Paterson
 Dave Peck
 Richardson Foundation
 Tachane Foundation Inc.
 Jim & Jan Tennant
 David Urquhart & the O'Reilly
 Family
 Terry & Melba Wright and Family
 Anonymous (2)

\$1,000–\$4,999

Brian and Shirley Akins Fund
 Matthew Baron
 Roberta Beach
 Wayne Borodenco
 Steven Brown
 Cambrian Credit Union
 Rheo Catt
 Nancy Clyde
 CN
 Mark & Dorothy Danzker Perpetual
 Trust Fund
 Jaquelyn Dawson
 The Embil Family
 Mary Giles
 John & Gail Guy
 Ralph Guy & Kris Owen
 Marc Guzzi
 Albert Hague
 Ernie Halligan
 Lorraine Hay
 The Estate of Gloria Huckles
 Donald Hudson
 Richard Jones
 Linda Klinke-Kopp
 Susanne & Peter Krahn
 Randie & Jan Kushnier

Corinne Larsen
 Jennifer Mauro
 Carol McArton
 Carlie McDonald
 Kyle McDonald
 Olive McDonald
 Violet & Kyle Normandeau
 Gerri O'Leary
 Colleen O'Morrow & Cameron
 Malcolmson
 Lynn Palframan
 Michael Prendergast
 Margaret Redmond & Greg Gillis
 Melanie & David Riker
 Estate of Clinton F. Robertson
 Brian & Sari Rosenberg
 Dean Schofield
 Douglas Scott
 Pramesh Selliah
 Cheryl & Sean Smith
 Stephen & Olive Spitzer
 Sandra Spragg
 Sonya Swiridjuk
 Richard & Diana Tardi
 In Memory of Dr. Robert Thorlakson
 Kristen & Megan Wegert
 Sabrina & Ian Wegert
 Anonymous (9)

Sponsorships (2022)

Access Credit Union
 APTN
 Arthur J. Gallagher Canada Ltd.
 Assiniboine Credit Union
 Bird Construction Company
 Bison Transport
 Boston Pizza
 Calm Air*
 Canadian Beverage Container
 Recycling Association
 Corpell's Water
 Domo Gasoline Corporation Ltd.
 Duboff Edwards Schachter LLP
 Johnston Group
 The Keg Steakhouse + Bar
 Larsen's Memorials Ltd.
 Lawn 'N' Order Custom
 Landscapes Inc.
 Lowey Insurance Agency Inc.
 Manitoba Blue Cross
 Manitoba Liquor & Lotteries
 Corporation
 Manitoba Pork
 Mercedes-Benz Winnipeg
 Payworks
 Prairie Mobile Communications*

Red River Cooperative Ltd.
 Shelmerdine Garden Centre
 Spirit Halloween*
 Steinbach Credit Union
 Telus Friendly Future Foundation
 Terracon Development Ltd.
 Thermea Nordik Spa
 Thompson Dorfman Sweatman LLP
 Trans Canada Brewing Company
 UKG
 Vandenberg's Fine Jewellery
 Wawanesa Insurance
 Winnipeg Airports Authority Inc.

Garden Party Supporters (2022)

\$10,000+

The Asper Foundation
 Birchwood BMW
 Dashir Lodge & Safaris*
 Susan Glass & Arni Thorsteinson,
 Shelter Canadian Properties
 Limited
 Brian & Ruth Hastings
 Jaguar Land Rover Winnipeg
 Bill & Theresa Parrish
 Winnipeg Free Press*

\$5,000+

Arlene & Allan
 Body Measure*
 Coal and Canary Candle Company*
 IJL*
 Lacoste Garden Centre
 MacDon Industries Ltd.
 Mayberry Fine Art*
 Park and Buzz*

Peterbilt Manitoba Ltd.
 Quintex Services Ltd.
 Bob & Kim Silver
 TD Bank Group
 Thompson Dorfman Sweatman

\$2,500+

Chaeban Ice Cream*
 CIBC Wood Gundy
 Darcy Zaporzan Wealth
 Management Group of RBC
 Dominion Securities Inc.
 Dumore Dental Corporation
 Flour & Flower*
 Jason Abraham Sign & Design*
 Maple Leaf Construction Ltd.
 Quantum Graphics & Consulting*
 RBC Wealth Management
 Dominion Securities
 Diane Shindleman
 Anonymous (1)

Grants (2022)

Association of Zoos and Aquariums
 Building Sustainable Communities
 Program
 Celebrate Canada Celebration and
 Commemoration Program
 Environment and Climate Change
 Canada
 The Goodman Foundation
 Government of Manitoba/Canada-
 Manitoba Job Grant (CMJG)
 Manitoba Government – Sector
 Support Program
 Manitoba Sport, Culture, and
 Heritage
 Travel Manitoba

The Winnipeg Foundation
 Winnipeg Transit

ParkShare Endowment

(cumulative to Dec. 31, 2022)

\$400,000

Shirley Richardson and her family

\$25,000–\$49,999

J.K. May Investments Ltd.

\$5,000–\$24,999

Jim & Margaret Astwood
 Robert & Gail Cipryk
 In loving memory of Sally Riley
 Dowler from her children and
 their families
 Brent & Debbie Gilbert
 Mark & Anne Gray & Family
 Marjorie & Kenneth Grower
 Debbie Hannah
 Jim & Roberta MacDonald
 Peter & Maureen Macdonald
 Lynne-Anne McFeetors
 The Powell Family
 David, Joanne Provinciano and
 Family
 Sandra & Harvey Sectar
 Paul & Christine Soubry
 Don & Jennifer Streuber
 Dr. Ken & Lorna Thorlakson
 Anonymous (2)

\$1,000–\$4,999

Wayne & Millie Acheson
 Brian and Shirley Akins Fund

Peggy Alto & Michael Guttormson
 James & Sharon August
 Sharon August
 Phyllis Bedder & Wayne Leach
 Amy Browne & Dennis Grantham
 Thomas & Donna Bryk
 Rheo Catt
 Cowin Steel
 Mark & Dorothy Danzker Perpetual
 Trust Fund
 Robert G. & Alison M. Darling
 The Dufresne Foundation
 Tim Edginton & Joan Hardy
 George and Carol Gamby
 Gregg & Mary Hanson
 Elizabeth & Kenneth Hanssen
 Marion & Myron Klysh
 Hillaine Kroft
 Rick Lee & Laurie Shapiro
 Trevor L. Maguire
 Donald R. McKenzie
 Peter & Anita Pelech
 Royal Bank of Canada
 Dean & Rachel Scaletta
 Susan & Ken Skinner
 Sonya & Scott Wright
 Eleanor Stardom
 Suncor Energy Foundation
 Ginny Twomey & Terry Johnston
 William & Maureen Watchorn
 Ken W. & Betty K. Wong
 Anonymous (3)

** *fondly remembered*

* *indicates gift-in-kind*





assiniboinepark.ca

55 Pavilion Crescent • Winnipeg, Manitoba • R3P 2N6

info@assiniboinepark.ca

PH 204 927 6000 | TF 1 877 927 6006 | F 204 927 7200